



MONASH University
Medicine, Nursing and Health Sciences



Psych 2010

**Study opportunities in
psychology and
psychiatry**

13 October 2009

www.med.monash.edu



MONASH University
Medicine, Nursing and Health Sciences



Psych 2010

Why study with the School of
Psychology, Psychiatry and
Psychological Medicine?

Professor Kim Cornish

Head of Discipline, Deputy Head of School

www.med.monash.edu



Why Monash?

- Monash is a member of Australia's prestigious "Group of Eight" leading universities
- Monash is a world leader in a wide range of research
- Monash has over 200,000 alumni and a powerful network of international alliances
- SPPPM is unique in Australia in bringing the psychology and psychiatry disciplines into a successful academic partnership



Why Monash Psych?

Clinical Strengths

> 14 Teaching Hospitals

Clinics, including the Clinical
Psychology Centre



Why Monash Psych? Centres and Research Units

- **Centre for Developmental Psychiatry & Psychology**
 - **Monash-Alfred Psychiatry Research Centre**
- **Monash Epworth Rehabilitation Research Centre**
 - **Southern Synergy**
- **Centre for Forensic Behavioural Science**
 - **Neurodegenerative Disorders Group**
 - **Aged Mental Health Unit**
- **Psychological & Behavioural Medicine/ Health Psychology Group**
 - **Mental Health Anthropology and Sociology Group**



Why Monash Psych? SPPPM Research Strengths

Behavioural and
Cognitive
Neuroscience

Mental Health
Translational
Research

Centres and Research Units

INFRASTRUCTURE SPECIALIST SUITES



Opportunities for Psych2010

Honours

4
programs

Coursework

7
programs

HDR

5
programs



MONASH University
Medicine, Nursing and Health Sciences



Psych 2010 Honours Programs

Associate Professor
Shantha Rajaratnam
Honours Coordinator, SPPPM

www.med.monash.edu



Psychology and Behavioural Neuroscience Honours programs

Primary Aims

Complete an integrated and comprehensive education in the discipline of psychology

Permit advanced level study in a range of areas

Provide advanced research training



Psychology Honours

Eligibility

Completed Undergraduate degree with 3 year APAC accredited psych major

Average of 70% in core 3rd year psych (likely cut-off 75-80%)

Course structure

Coursework 50%

Research 50%



Psychology Honours: Course Structure

Research Project

Literature review

Research paper

Coursework

Statistics and research design

Ethical and professional issues

Psychological assessment

Contemporary issues elective



Behavioural Neuroscience Honours

Eligibility

Average of 70%** across 4 x
BNS 3rd year units

** students scoring 65-69%
will be considered on a case-
by-case basis providing they
can make a special case.

Course structure

**several possible honours
programs (based on applicants
3rd year studies) such as**

*Advanced Behavioural
Neuroscience (BNS4100/4200);
or

Psychology Honours (PSY4100,
etc)



Behavioural Neuroscience Honours: Course Structure (Advanced BNS)

BNS 4100 (87.5%)

2 Research Projects: 70%

Literature review: 20%

Oral Poster
presentation: 10%

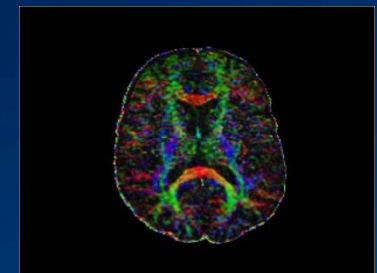
BNS4200 (12.5%)

Research Design and
Analysis

Honours Programs: Biomedical Science

Neuroscience projects also available through Biomedical Science (Hons) program. Projects offered in areas including:

- animal models of depression or anxiety;
- mechanisms underlying sleep and sleep disorders, impact of sleep disorders and sleep deprivation on health, safety and productivity, and novel therapeutic interventions for sleep disorders; and
- role of astrocytes in brain function and dysfunction (e.g. Alzheimer's disease, stroke etc).





Honours Programs: Medical Science

Aims include:

Within human, public health and biomedical science research

- acquire an understanding of various methodologies
- acquire an in-depth understanding of an aspect, issue or problem
- demonstrate an appreciation of the ethical requirements for research activities
- demonstrate the capacity to design, frame, conduct and report on a small-scale project



Honours Programs: Medical Science

Eligibility

Students who have completed at least the first 2 years of an MBBS degree

Course Structure

Students undertake research activities supervised through a school of the faculty and complete a minor thesis.

Monash MBBS students
-honours research project (48 points).

Non-Monash medicine/surgery students
-honours research project (36 points)
-2 course work units in research methodology (12 points).

Honours Degree of BMS (Global Health)
- course unit in global health research (12 points)
- two project units (36 points).



MONASH University
Medicine, Nursing and Health Sciences



Psych 2010

Introduction to postgraduate studies and research degrees

Professor Jennie Ponsford
Director Postgraduate Studies

www.med.monash.edu



Postgraduate Studies

Masters by coursework

Master of Psychological
Medicine

Master of Child
Psychoanalytic Psychotherapy

Master of Organisational
Psychology

Master of Psychology (Health)

Other coursework programs

Forensic Behavioural
Science

Child Psychotherapy
Studies

Community Mental
Health

Mental Health for
Teaching Professions



Postgraduate Studies

Research Programs

Doctor of Philosophy (PhD)

Master of Philosophy

Master of Biomedical
Science (MBiomedSc)

Professional Doctorates

Doctor of Psychology
(Clinical)

Doctor of Psychology
(Clinical Neuropsychology)

Doctor of Psychology
(Organisational)



Doctor of Psychology: streams

Clinical Neuropsychology

Assessment and rehabilitation with adults and children with brain disorder or injury in hospitals or the community

Clinical Psychology

Assessment and therapy with individuals with psychiatric disorders or everyday health problems in hospitals and the community

Organisational Psychology

Study mental health and behaviour in an organisational context, working in recruitment, change management, organisational strategy and workplace productivity



MONASH University
Medicine, Nursing and Health Sciences



Psych 2010 Clinical NeuroPsychology

Professor Jennie Ponsford
Program Coordinator

www.med.monash.edu



Doctor of Psychology (Clinical Neuropsychology)

Eligibility

APAC accredited fourth-year in psychology with Honours I or IIA

Selection Interview

Referee Reports

Aims

To prepare graduates for opportunities in :

- Neurology/Neurosurgery
- Rehabilitation
- Paediatrics
- Geriatrics
- Psychiatry



Doctor of Psychology (Clinical Neuropsychology)

Course Components

Research (Thesis
60,000 words)
70%

Coursework 20%

Placements 10%

Advanced specialist internship options

Rehabilitation

Child and
Adolescent

Geriatric

Psychiatric

Forensic
neuropsychology

Placements

188 days



MONASH University
Medicine, Nursing and Health Sciences



Psych 2010 Clinical Psychology

Professor Paul Martin
Program Coordinator

www.med.monash.edu



Doctor of Psychology (Clinical)

Eligibility

APAC accredited fourth-year in psychology with Honours I or IIA

Selection Interview

Referee Reports

Why Clinical Psychology

Satisfying career

Most established professional specialisation in psychology

Superior career opportunities

Specialisation thriving – eg new Medicare items for mental health introduced in November, 2006



Doctor of Psychology (Clinical)

Course Components

Research (Thesis
60,000 words)
70%

Coursework 20%

Placements 10%

Specialisation Options at 3rd year

Clinical forensic
psychology

Clinical child,
adolescent and
family psychology

Advanced Health
psychology

Placements

126 days in the
first two years

92 day internship
in a specialisation
in the third year



MONASH University
Medicine, Nursing and Health Sciences



Psych 2010 Organisational Psychology

Dr Simon Albrecht
Program Coordinator

www.med.monash.edu



Organisational Psychology

Eligibility

APAC accredited fourth-year in psychology with Honours I or IIA

Selection Interview

Referee Reports

Aims

To prepare graduates for opportunities in :

- Human resources management
- Organisational change consultancy
- Public opinion and marketing analysis
- Training and development
- Vocational and career counselling



Doctor of Psychology (Organisational) Master of Organisational Psychology

Coursework

Common
across
DPsych and
Masters

Placements

DPsych
188 days

Masters
125 days

Research Thesis

DPsych
60-70,000 words
(70% of degree)

Masters:
Lit Review 4-5,000
words
Minor Research Thesis
5-7,000 words



MONASH University
Medicine, Nursing and Health Sciences



Psych 2010 Health Psychology

Associate Professor Felicity Allen
Program Coordinator

www.med.monash.edu



Health Psychology

Eligibility

APAC accredited fourth year in psychology with Honours I or IIA

Referees Reports

Aims

To provide training across all aspects of health psychology, including:

- Health promotion
- Social epidemiology
- Clinical health psychology
- Assessment



Master of Psychology (Health)

Course structure

Coursework 50%

Supervised
Placements (125
days) 25%

Research 25%

Duration

4 years
part time



MONASH University
Medicine, Nursing and Health Sciences



Psych 2010 Forensic Behavioural Science

Dr Stuart Thomas
Program Coordinator

www.med.monash.edu



Forensic Behavioural Science

Eligibility

- 3 year's Bachelor degree (or equivalent)
- 1 year of relevant postgraduate study/ work experience

Aims

- Enhance the knowledge and skills of professionals working with people displaying antisocial and criminal behaviour
- Assist clients with complex mental health needs



Forensic Behavioural Science

Coursework structure

Graduate Certificate: four study units

Graduate Diploma: eight study units

Duration

Grad Cert: 1 year

Grad Dip: 2 years



MONASH University
Medicine, Nursing and Health Sciences



Psych 2010
Child Psychotherapy
Masters of Child Psychoanalytic Psychotherapy
and
Graduate Diploma in Child Psychotherapy
Studies

Dr Jeanette Beaufoy
Program Coordinator

www.med.monash.edu



Child Psychotherapy

Eligibility

Master's: Bachelor's degree with a minimum of two years practice in the field, and be currently employed in therapeutic work with children

Grad Dip: Bachelor degree in related field.

Aims

Masters: Provide the clinical skills required to undertake assessment and psychotherapy of children, adolescents and parents for professionals working in the field

Grad Dip: provide health, welfare and education professionals with the knowledge and understanding to work with children and adolescents with emotional and behavioral problems



Child Psychotherapy

Masters structure

Supervised
Clinical Practice

Coursework

Minor Thesis

Grad Dip Structure

Off-campus
learning by
coursework

Residential
workshop

Duration

Masters: part-
time over 4
years

Grad Dip:
part-time over
2 years



Psych 2010

Questions???